



Hair World

collection



An Introduction to Hair World

Who we are, where it all began and where we are going . . .

Who we are

Hair World UK Ltd is a family run business that has been established for over 40 years, supplying the UK with some of the finest quality wigs and hair pieces on the market to date. We continually strive to ensure that every single one of our products is designed to perfection, our collection is a superb range of fashionable and classical styles, some with ultra lightweight thin wefts, hand tied monofilament tops and many more, you will never know you are wearing a wig and more importantly neither will anyone else. It doesn't stop there, our super friendly and proficient team are dedicated to ensuring our customers are taken care of from start to finish.

Where it all began

In 1982 Anne and Mervyn Sargeant designed and built an extensive ladies and mens hairdressing salon which rapidly became a thriving, busy and bustling one. Gradually this changed into wholesaling wigs and hairpieces and in 1993 Hair World UK Ltd was opened and went from strength to strength. The hairdressing premises was closed to allow the growth of Hair World UK Ltd and in 1997 their daughters Keeley and Victoria joined the business. In 2004 a purpose-built warehouse was constructed in Cambridgeshire to accommodate the wig business that was dramatically evolving.

Where we are going

We are extremely proud to have designed a product brand that is now stocked all over the UK and continues to grow. We will continue to develop and introduce new products to the Hair World UK range. Our passion for the wig industry is huge and we are excited for what the future holds!



India

Specifications

Base	Monofilament Top / Lace Front
Head size	Average
Hair length	1 ³ / ₄ - 6"
Fringe	3 ¹ / ₂ - 4 ¹ / ₂ "
Crown	6"
Side	6"
Nape	1 ³ / ₄ "
Weight	69 grams

Synthetic Colours

12H, 16H,
Burnt Cinnamon
Polar Blonde (Rooted)
Sparkling Champagne (Rooted)
Toasted Pecan (Rooted)



Colour Featured

Polar Blonde
(Rooted)

Antonia

Specifications

Base	Monofilament Top / Lace Front
Head size	Average
Hair length	7 - 14"
Fringe	7 - 9"
Crown	9 - 12"
Side	9 - 11"
Nape	12 - 14"
Weight	138 - 143 grams

Synthetic Colours

1BH, 4H, 26H,
Black Cherry
Candy Blonde (Rooted)
Cherry Blossom (Rooted)
Cinnamon Twist (Ombre)
Iced Platinum (Rooted)
Mixed Spice (Rooted)
Sparkling Champagne (Rooted)
Toasted Pecan (Rooted)
Vanilla Bean (Rooted)



Colour Featured

Cinnamon Twist
(Ombre)

Ivy

Specifications

Base	Monofilament Top / Lace Front
Head size	Average
Hair length	3 - 8 1/2"
Fringe	6 1/2"
Crown	7 1/2"
Side	8 1/2"
Nape	3"
Weight	100 grams

Synthetic Colours

12H, 16H,
Burnt Cinnamon
Polar Blonde (Rooted)
Sparkling Champagne (Rooted)
Toasted Pecan (Rooted)

Colour Featured

Polar Blonde
(Rooted)

Kay

Specifications

Base

Monofilament Top

Head size Petite

Hair length 3¹/₄ - 8¹/₂"

Fringe 3¹/₄"

Crown 8¹/₂"

Side 7¹/₂"

Nape 5"

Weight 91 grams

Synthetic Colours

4H, 6H, 8H, 14/24,

14/24H, 26H, 24H18,

Arctic Ice

Burnt Cinnamon

Candy Blonde (Rooted)

Frosted Mink (Rooted)

Frosted Walnut (Rooted)

Summer Wheat

Toasted Pecan (Rooted)

Vanilla Bean (Rooted)



Colour Featured

Vanilla Bean
(Rooted)



Eden

Specifications

Base	Monofilament Top / Lace Front
Head size	Average
Hair length	7 - 14"
Fringe	7 - 9"
Crown	9 - 12"
Side	9 - 11"
Nape	12 - 14"
Weight	138 - 143 grams

Synthetic Colours

1BH, 4H, 26H,
Black Cherry
Candy Blonde (Rooted)
Cherry Blossom (Rooted)
Cinnamon Twist (Ombre)
Iced Platinum (Rooted)
Mixed Spice (Rooted)
Sparkling Champagne (Rooted)
Toasted Pecan (Rooted)
Vanilla Bean (Rooted)

Colour Featured

26H



Charlie

Specifications

Base

Monofilament Top

Head size Average

Hair length 2³/₄ - 10¹/₂"

Fringe 4"

Crown 10¹/₂"

Side 8¹/₂"

Nape 2³/₄"

Weight 89 grams

Synthetic Colours

4H, 6H, 8H, 12AH, 12H,

14H, 16H, 24H18, 26H,

27AH, 30H, 56, 88H,

Arctic Ice

Barley

Burnt Cinnamon

Candy Blonde (Rooted)

Chocolate Flame

Frosted Mink (Rooted)

Frosted Walnut (Rooted)

Iced Platinum (Rooted)

Rich Coffee Bean

Silver Pearl

Sparkling Champagne (Rooted)

Summer Wheat

Toasted Pecan (Rooted)

Vanilla Bean (Rooted)



Colour Featured

27AH

Roz

Specifications

Base	Monofilament Top / Lace Front
Head size	Petite
Hair length	3 1/4 - 5"
Fringe	3 3/4"
Crown	5"
Side	3 1/2"
Nape	3 1/4"
Weight	63 grams

Synthetic Colours

4H, 6H, 8H, 12H, 26H,
Burnt Cinnamon
Rich Coffee Bean
Silver Pearl
Toasted Pecan (Rooted)



Colour Featured

Silver Pearl



Anya

Specifications

Base	Monofilament Top / Lace Front
Head size	Average
Hair length	3 ³ / ₄ - 12 ¹ / ₄ "
Fringe	3 ³ / ₄ "
Crown	11 ³ / ₄ "
Side	12 ¹ / ₄ "
Nape	12 ¹ / ₄ "
Weight	150 grams

Synthetic Colours

1H, 1BH, 4H, 6H, 8H, 12AH,
12H, 24H18, 26H, 614H, 131H,
Arctic Ice
Barley
Burnt Cinnamon
Candy Blonde (Rooted)
Chocolate Flame
Frosted Walnut (Rooted)
Rich Coffee Bean
Silver Pearl
Sparkling Champagne (Rooted)
Summer Wheat
Toasted Pecan (Rooted)
Vanilla Bean (Rooted)



Colour Featured

Summer Wheat

Millie

Specifications

Base	Monofilament Top / Lace Front
Head size	Average
Hair length	4 - 8 1/2"
Fringe	7"
Crown	8 1/2"
Side	7"
Nape	4"
Weight	78 grams

Synthetic Colours

4H, 6H, 8H, 12H, 14H,
16H, 26H,
Burnt Cinnamon
Rich Coffee Bean
Toasted Pecan (Rooted)



Colour Featured

26H

Cara

Specifications

Base	Monofilament Top / Lace Front
Head size	Average
Hair length	3 - 5 1/2"
Fringe	3 - 4"
Crown	4 - 5 1/2"
Side	4 - 5 1/2"
Nape	3"
Weight	64 grams

Synthetic Colours

- 1BH, 4H, 8H, 12H,**
- Candy Blonde** (Rooted)
- Frosted Mink** (Rooted)
- Frosted Walnut** (Rooted)
- Iced Platinum** (Rooted)
- Silver Pearl**
- Sparkling Champagne** (Rooted)
- Summer Wheat**
- Toasted Pecan** (Rooted)
- Vanilla Bean** (Rooted)



Colour Featured

Iced Platinum
(Rooted)

Drew

Specifications

Base	Monofilament Crown
Head size	Average
Hair length	1 ³ / ₄ - 5"
Fringe	2 ¹ / ₂ - 5"
Crown	2 ¹ / ₂ - 3 ³ / ₄ "
Side	1 ³ / ₄ - 2 ¹ / ₂ "
Nape	1 ³ / ₄ "
Weight	62 grams

Synthetic Colours

8H, 12AH, 12H, 14H,
24H18, 26H, 27AH,
Burnt Cinnamon
Silver Pearl



Colour Featured

27AH



Chelsea

Specifications

Base	Monofilament Top / Lace Front
Head size	Average
Hair length	6 ¹ / ₂ - 13 ¹ / ₂ "
Fringe	10 - 12"
Crown	13 - 13 ¹ / ₂ "
Side	10 - 12 ¹ / ₂ "
Nape	6 ¹ / ₂ - 7"
Weight	129 - 134 grams

Synthetic Colours

1BH, 4H, 8H, 12H, 26H, 27AH,

Arctic Ice

Black Cherry

Candy Blonde (Rooted)

Cherry Blossom (Rooted)

Cinnamon Twist (Ombre)

Glacier (Rooted)

Iced Platinum (Rooted)

Mixed Spice (Rooted)

Silver Amethyst (Rooted)

Summer Wheat

Toasted Pecan (Rooted)

Vanilla Espresso



Colour Featured

Iced Platinum
(Rooted)

Pippa

Specifications

Base	Monofilament Top / Lace Front
Head size	Average
Hair length	5 - 8 ¹ / ₂ "
Fringe	6 - 7 ¹ / ₂ "
Crown	8 ¹ / ₂ "
Side	7 ¹ / ₂ "
Nape	5"
Weight	98 grams

Synthetic Colours

4H, 6H, 8H, 12AH, 12H,
14H, 26H,
Burnt Cinnamon
Rich Coffee Bean
Toasted Pecan (Rooted)

Colour Featured

14H

Shona

Specifications

Base	Monofilament Top / Lace Front
Head size	Average
Hair length	2 - 5 ³ / ₄ "
Fringe	3 ³ / ₄ "
Crown	5 ³ / ₄ "
Side	3"
Nape	2"
Weight	64 grams

Synthetic Colours

4H, 6H, 8H, 12AH, 12H,
14/24H, 18/22H, 24H18,
26H, 27AH, 30H, 56,

Burnt Cinnamon

Candy Blonde (Rooted)

Frosted Mink (Rooted)

Frosted Walnut (Rooted)

Iced Platinum (Rooted)

Silver Pearl

Sparkling Champagne (Rooted)

Toasted Pecan (Rooted)



Colour Featured

8H

Brooke

Specifications

Base	Monofilament Top
Head size	Average
Hair length	3 1/2" - 5 1/2"
Fringe	3 1/2"
Crown	5 1/2"
Side	5 1/4"
Nape	4"
Weight	56 grams

Synthetic Colours

**4H, 8H, 12AH, 12H,
14/24H, 16H, 614H,
Burnt Cinnamon
Candy Blonde (Rooted)
Chocolate Flame
Frosted Mink (Rooted)
Frosted Walnut (Rooted)
Iced Platinum (Rooted)
Sparkling Champagne (Rooted)
Toasted Pecan (Rooted)
Vanilla Bean (Rooted)**



Colour Featured

Frosted Mink
(Rooted)

Willow

Specifications

Base
Monofilament Top / Lace Front

Head size Average

Hair length 5 - 11"

Fringe 7"

Crown 11"

Side 10"

Nape 8"

Weight 104 grams

Synthetic Colours

4H, 8H, 12AH, 12H, 14H,

24H18, 26H, 27AH,

Burnt Cinnamon

Candy Blonde (Rooted)

Frosted Mink (Rooted)

Frosted Walnut (Rooted)

Iced Platinum (Rooted)

Rich Coffee Bean (Rooted)

Toasted Pecan (Rooted)

Vanilla Bean (Rooted)



Colour Featured

27AH

Perrie

Specifications

Base	Monofilament Top / Lace Front
Head size	Average
Hair length	3 - 6 1/2"
Fringe	4 1/2 - 5 1/2"
Crown	3 1/2 - 6 1/2"
Side	3 - 5 1/2"
Nape	3"
Weight	75 - 77 grams

Synthetic Colours

8H, 12H,
Arctic Ice
Frosted Mink (Rooted)
Frosted Walnut (Rooted)
Iced Platinum (Rooted)
Sparkling Champagne (Rooted)
Summer Wheat
Toasted Pecan (Rooted)
Vanilla Bean (Rooted)



Colour Featured

Iced Platinum
(Rooted)

Cleo

Specifications

Base

Monofilament Top

Head size	Petite
Hair length	1 ³ / ₄ - 6 ¹ / ₄ "
Fringe	3 ³ / ₄ "
Crown	6 ¹ / ₄ "
Side	5"
Nape	1 ³ / ₄ "
Weight	65 grams

Synthetic Colours

4H, 8H, 12H, 14H, 16H, 26H,

Burnt Cinnamon

Rich Coffee Bean

Silver Pearl

Sparkling Champagne (Rooted)

Toasted Pecan (Rooted)



Colour Featured

Sparkling Champagne
(Rooted)

Ashley

Specifications

Base
Double Layer Monofilament Top /
Lace Front

Head size Average

Hair length 2¹/₄ - 3¹/₄"

Fringe 2³/₄"

Crown 3¹/₄"

Side 2³/₄"

Nape 2¹/₄"

Weight 52 grams

Synthetic Colours

4H, 12H, 14/24H, 16H,

18/22H, 24H18, 27AH,

38H, 54, 56, 88H,

Barley

Burnt Cinnamon

Rich Coffee Bean

Silver Pearl

Toasted Pecan (Rooted)

Colour Featured

Toasted Pecan
(Rooted)

Scarlett

Specifications

Base	Monofilament Parting / Lace Front
Head size	Average
Hair length	3 1/4 - 7"
Fringe	4 - 7"
Crown	4 - 7"
Side	3 1/4 - 5 1/2"
Nape	4 1/2"
Weight	78 grams

Synthetic Colours

4H, 8H, 12AH, 12H,
14H, 26H, 27AH,
Burnt Cinnamon
Frosted Mink (Rooted)
Frosted Walnut (Rooted)
Iced Platinum (Rooted)
Rich Coffee Bean
Toasted Pecan (Rooted)



Colour Featured

27AH

Fern

Specifications

Base	Monofilament Top / Lace Front
Head size	Average
Hair length	2 1/2 - 4 1/2"
Fringe	4"
Crown	4 1/2"
Side	3 3/4"
Nape	2 1/2"
Weight	61 grams

Synthetic Colours

4H, 6H, 8H, 12AH, 12H,
14/24H, 16H, 26H,
27AH, 56,
Arctic Ice
Burnt Cinnamon
Frosted Mink (Rooted)
Rich Coffee Bean
Silver Pearl
Summer Wheat
Vanilla Bean (Rooted)

Colour Featured

Rich Coffee Bean



Layla

Specifications

Base

Monofilament Top / Lace Front

Head size Average

Hair length 7 - 12 1/2"

Fringe 7 - 10"

Crown 10 - 12 1/2"

Side 11 - 12 1/2"

Nape 11"

Weight 121 - 126 grams

Synthetic Colours

Black Cherry

Candy Blonde (Rooted)

Cherry Blossom (Rooted)

Cinnamon Twist (Ombre)

Glacier (Rooted)

Iced Platinum (Rooted)

Mixed Spice (Rooted)

Silver Amethyst (Rooted)

Sparkling Champagne (Rooted)

Summer Wheat

Toasted Pecan (Rooted)

Vanilla Bean (Rooted)

Vanilla Espresso



Colour Featured

Candy Blonde
(Rooted)

Faith

Specifications

Base	Monofilament Parting
Head size	Average
Hair length	3 1/2 - 11"
Fringe	3 1/2"
Crown	9 1/2"
Side	11"
Nape	11"
Weight	135 grams

Synthetic Colours

4H, 6H, 8H, 12H, 14H,
16H, 24H18, 27AH,
131H, 614H,
Barley
Burnt Cinnamon
Toasted Pecan (Rooted)

Colour Featured

Toasted Pecan
(Rooted)



Alex

Specifications

Base	Monofilament Top
Head size	Average
Hair length	2 - 3 ¹ / ₄ "
Fringe	3"
Crown	3 ¹ / ₄ "
Side	3 ¹ / ₄ "
Nape	2"
Weight	55 grams

Synthetic Colours

4H, 8R, 8H, 8/27R, 12R,
12H, 16H, 18/22H, 38H,
51, 54, 56, 60, 88R, 88H,
Biscuit (12/26R)
Soft Silver (60R)
Sunny Haze (24R)



Colour Featured

60

Talliah

Specifications

Base	Monofilament Parting
Head size	Average
Hair length	1 ³ / ₄ - 6"
Fringe	3 - 4"
Crown	3 ³ / ₄ - 6"
Side	4 - 5"
Nape	1 ³ / ₄ "
Weight	71 grams

Synthetic Colours

4H, 8H, 12AH, 12H,
14/24H, 26H, 27AH,
Rich Coffee Bean

Colour Featured

8H

Annabel

Specifications

Base	Monofilament Parting
Head size	Average
Hair length	4 - 9"
Fringe	4"
Crown	9"
Side	7 ³ / ₄ "
Nape	6 ³ / ₄ "
Weight	64 grams

Synthetic Colours

4H, 12H, 88H,
Barley
Burnt Cinnamon
Chocolate Flame
Rich Coffee Bean
Toasted Pecan (Rooted)

Colour Featured

Rich Coffee Bean

Frankie

Specifications

Base	Monofilament Top
Head size	Average
Hair length	3 - 4"
Fringe	3"
Crown	4"
Side	3 ³ / ₄ "
Nape	3 ¹ / ₄ "
Weight	63 grams

Synthetic Colours

8/26R, 12R, 12/30BT,
16H, 16/22R, 26H, 26R,
38H, 54, 56,
Biscuit (12/26R)
Soft Silver (60R)



Colour Featured

12/30BT

Zara

Specifications

Base	Monofilament Top
Head size	Petite
Hair length	2½ - 3½"
Fringe	2½"
Crown	3½"
Side	3"
Nape	2½"
Weight	53 grams

Synthetic Colours

8R, 16H, 16/22R, 18/22H,
38H, 51, 54, 56, 88R,
Sunny Haze (24R)
Soft Silver (60R)



Colour Featured

51

Kris

Specifications

Base
Double Layer Monofilament Top /
Lace Front

Head size	Petite
Hair length	2 ¹ / ₄ - 3 ¹ / ₄ "
Fringe	2 ³ / ₄ "
Crown	3 ¹ / ₄ "
Side	2 ³ / ₄ "
Nape	2 ¹ / ₄ "
Weight	52 grams

Synthetic Colours

4H, 12H, 14/24H, 16H,
18/22H, 24H18, 27AH,
38H, 54, 56, 60, 88H,
Arctic Ice
Burnt Cinnamon
Rich Coffee Bean
Silver Pearl
Toasted Pecan (Rooted)



Colour Featured

12H



Macie

Specifications

Base	Monofilament Parting
Head size	Petite
Hair length	3 ³ / ₄ - 10 ³ / ₄ "
Fringe	3 ³ / ₄ "
Crown	10 ³ / ₄ "
Side	9"
Nape	4"
Weight	106 grams

Synthetic Colours

4H, 6H, 8H, 12AH, 12H,
14H, 16H, 24H18, 26H,
27AH, 88H,
Arctic Ice
Burnt Cinnamon
Chocolate Flame
Rich Coffee Bean
Summer Wheat
Toasted Pecan (Rooted)



Colour Featured

24H18

Tori

Specifications

Base	Wefted / Lace Front
Head size	Average
Hair length	1 1/4 - 5 1/4"
Fringe	3 - 5 1/4"
Crown	4"
Side	1 1/4 - 2 3/4"
Nape	1 1/4 - 2 1/4"
Weight	68 grams

Synthetic Colours

4H, 12H, 14H, 16H, 26H,
27AH, 60H,
Burnt Cinnamon
Rich Coffee Bean
Toasted Pecan (Rooted)

Colour Featured
Burnt Cinnamon

Keeley

Specifications

Base

Wefted / Lace Front

Head size Average

Hair length 2¹/₄ - 8¹/₂"

Fringe 3¹/₂ - 5"

Crown 4¹/₂ - 8¹/₂"

Side 6 - 7"

Nape 2¹/₄"

Weight 76 grams

Synthetic Colours

4H, 8H, 12AH, 12H, 14H,

16H, 26H,

Rich Coffee Bean

Silver Pearl

Toasted Pecan (Rooted)



Colour Featured

Toasted Pecan
(Rooted)

Ella

Specifications

Base	Wefted
Head size	Average
Hair length	2 1/4 - 3 1/4"
Fringe	2 3/4"
Crown	3 1/4"
Side	2 3/4"
Nape	2 1/4"
Weight	56 grams

Synthetic Colours

4H, 6H, 8H, 12AH, 12H,
14/24H, 18/22H, 26H,
27AH, 38H, 56, 88H



Colour Featured

88H



Abbie

Specifications

Base	Wefted
Head size	Petite
Hair length	1 1/4 - 3 1/4"
Fringe	3 1/4"
Crown	3 1/2"
Side	3 1/4"
Nape	1 1/4"
Weight	55 grams

Synthetic Colours

14, 14/24, 14/24H, 16H,
17/101, 18/22, 34, 38R,
38H, 51, 54, 56, 60, 88R,
88H,
Biscuit (12/26R)



Colour Featured

Biscuit (12/26R)

Jamie

Specifications

Base	Wefted
Head size	Average
Hair length	2 ¹ / ₄ - 3 ¹ / ₂ "
Fringe	2 ³ / ₄ "
Crown	3 ¹ / ₂ "
Side	3 ¹ / ₄ "
Nape	2 ¹ / ₄ "
Weight	50 grams

Synthetic Colours

8/14R, 16H, 16/22R,
38R, 38H, 56, 60, 88R,
Biscuit (12/26R)
Sunny Haze (24R)



Colour Featured

16/22R



Emily

Specifications

Base	Monofilament Top / Lace Front
Base	Wefted
Head size	Petite
Hair length	2 1/2 - 3"
Fringe	2 1/2"
Crown	3"
Side	3"
Nape	3"
Weight	64 grams

Synthetic Colours

12, 14/24H, 16, 38, 48,
54, 56, 60



Colour Featured

14/24H

Eve

Specifications

Base	Wefted
Head size	Average
Hair length	2 - 3"
Fringe	3"
Crown	3"
Side	3"
Nape	2"
Weight	63 grams

Synthetic Colours

8/27R, 17/101, 38R, 38H,
54, 56, 88R, 88H, 101,
Biscuit (12/26R)
Soft Silver (60R)
Sunny Haze (24R)

Colour Featured

Sunny Haze (24R)

Dani

Specifications

Base
Fully Hand Tied / Lace Front

Head size Average

Hair length 12 - 14"

Hair Type 100% Remy

Weight 184 grams

Human Hair Colours

2H, 5H,
Burnt Cinnamon
Caramel Blonde



Colour Featured
Burnt Cinnamon

Sienna

Specifications

Base	Monofilament Top
Head size	Small / Average
Hair length	16"
Hair Type	100% Remy
Weight	205 grams

Human Hair Colours

2H, 3H, 4H, 5H, 7H, 9H,
7H-Ombre

Human Hair



Colour Featured

7H

Skye

Specifications

Base

Monofilament Top

Head size Average

Hair length 7 - 10 1/2"

Hair Type 100% Remy

Weight 117 grams

Human Hair Colours

2H, 3H, 4H, 5H, 7H, 9H



Colour Featured

3H

Elegance Topper



Specifications

Base material

Monofilament Silk with a PU edging

Knot type Double split knot

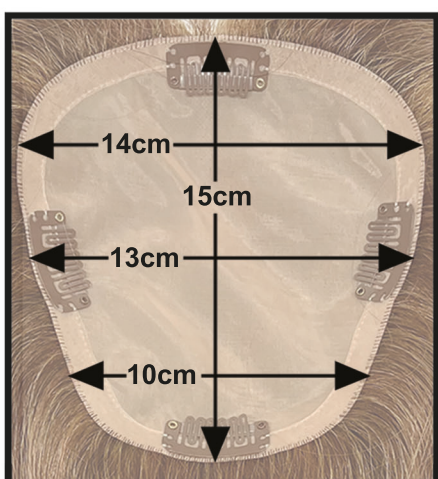
Hair length 12"

Hair Type 100% Remy

Weight 65 grams

Human Hair Colours

3H, 5H,
Burnt Cinnamon
Caramel Blonde
Ebony
Frosted Walnut



Information

The Elegance Topper is a unique system created to add volume, length and cover thinning areas.

Four pre-attached comb clips for easy application.

Colour Featured

Burnt Cinnamon

Synthetic Colours



1H



1BH



4H



6H



8H



8R



8/14R



8/26R



8/27R



12



12R



12H



12AH



12/30BT



Biscuit
12/26R



14



14/24



14H



14/24H



16



16H



16/22R



17/101



18/22



18/22H



Sunny Haze
24R



24H18



26R



26H



88R



88H



614H



101



27AH



30H



131H



34



38



38H



38R



48



51



54



56



60H



Soft Silver
60R



60

Synthetic Colours



Arctic Ice



Barley



Black Cherry



Burnt Cinnamon



Butterscotch



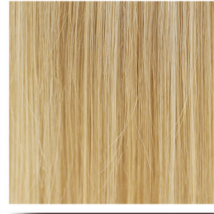
Chocolate Flame



Rich Coffee Bean



Silver Pearl



Summer Wheat



Vanilla Espresso

Graduated Root Colours



Candy Blonde
(Rooted)



Cherry Blossom
(Rooted)



Cinnamon Twist
(Ombre)



Frosted Mink
(Rooted)



Frosted Walnut
(Rooted)



Glacier
(Rooted)



Iced Platinum
(Rooted)



Mixed Spice
(Rooted)



Polar Blonde
(Rooted)



Silver Amethyst
(Rooted)



Sparkling Champagne
(Rooted)



Toasted Pecan
(Rooted)

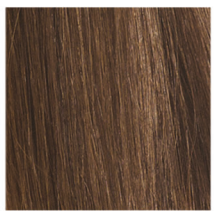


Vanilla Bean
(Rooted)

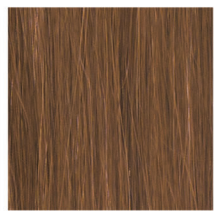
Human Hair Colours



2H



3H



4H



5H



7H



7H Ombre



9H



Burnt Cinnamon



Caramel Blonde



Ebony



Frosted Walnut



Abbie
Wefted
Petite



Alex
Mono Top
Average



Annabel
Mono Parting
Average



Antonia
Mono Top / Lace Front
Average



Anya
Mono Top / Lace Front
Average



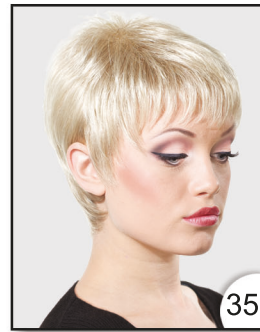
Cleo
Mono Top
Petite



Drew
Mono Crown
Average



Eden
Mono Top / Lace Front
Average



Ella
Wefted
Average



Emily
Wefted
Petite



Ivy
Mono Top / Lace Front
Average



Jamie
Wefted
Average



Kay
Mono Top
Petite



Keeley
Wefted / Lace Front
Average



Kris
Double Layer
Mono Top / Lace Front
Petite



Roz
Mono Top / Lace Front
Petite



Scarlett
Mono Parting / Lace Front
Average



Shona
Mono Top / Lace Front
Average



Talliah
Mono Parting
Average



Tori
Wefted / Lace Front
Average



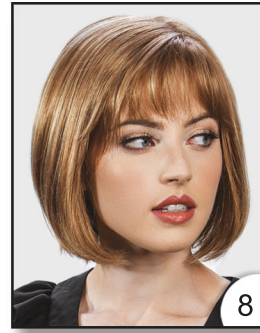
Ashley
Double Layer
Mono Top / Lace Front
Average



Brooke
Mono Top
Average



Cara
Mono Top / Lace Front
Average



Charlie
Mono Top
Average



Chelsea
Mono Top / Lace Front
Average



Eve
Wefted
Average



Faith
Mono Parting
Average



Fern
Mono Top / Lace Front
Average



Frankie
Mono Top
Average



India
Mono Top / Lace front
Average



Layla
Mono Top / Lace Front
Average



Macie
Mono Parting
Petite



Millie
Mono Top / Lace Front
Average



Perrie
Mono Parting / Lace Front
Average



Pippa
Mono Top / Lace Front
Average



Willow
Mono Top / Lace Front
Average



Zara
Mono Top
Petite

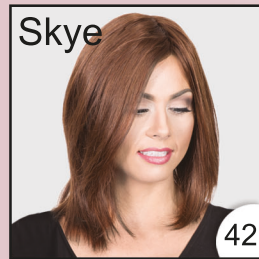
Human Hair



Dani
Mono Top ~ Average



Sienna
Mono Top ~ Small / Average



Skye
Mono Top ~ Average



Elegance
Mono Silk Base ~ Topper



India 16H