

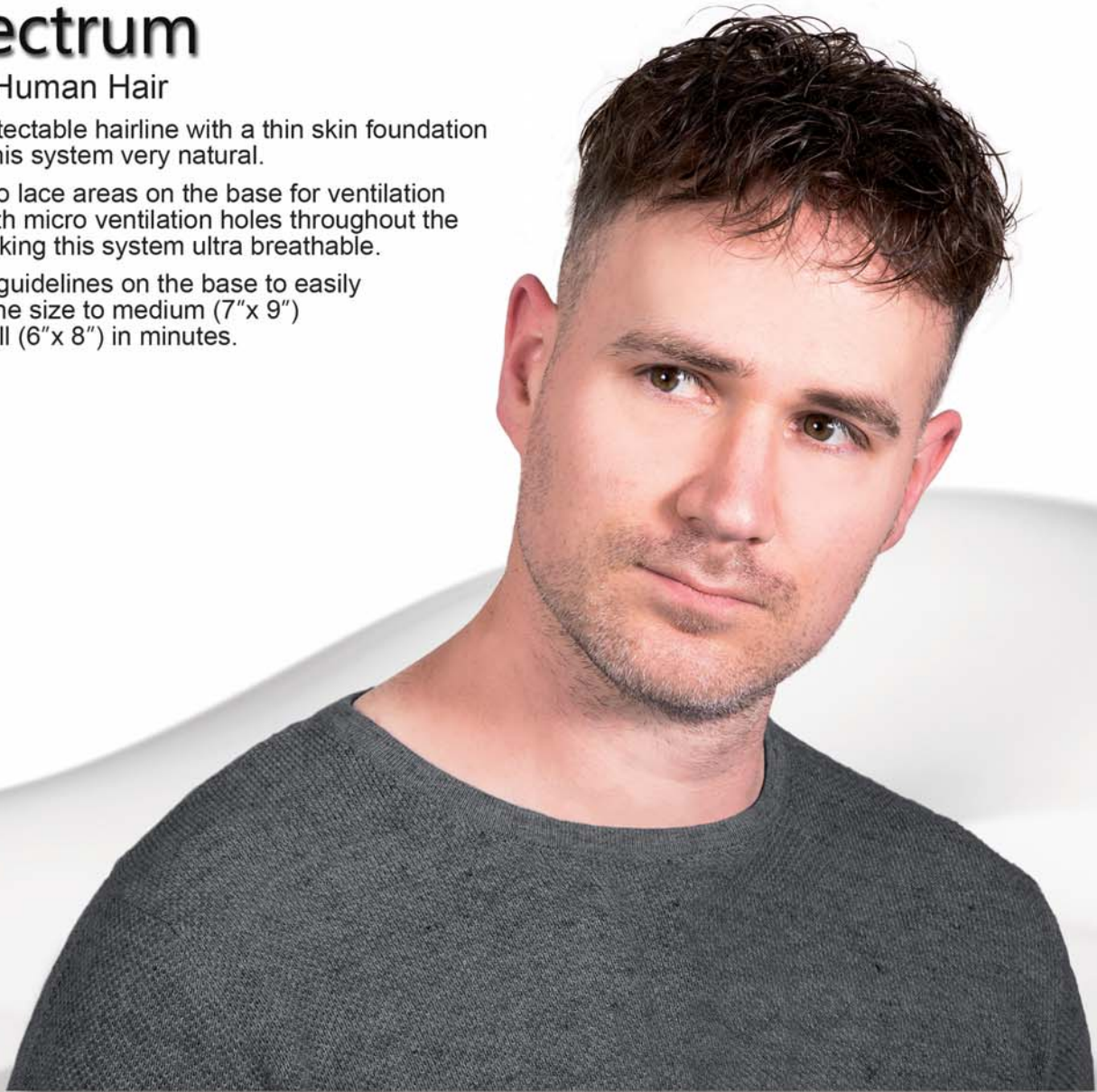
# Spectrum

## 100% Human Hair

An undetectable hairline with a thin skin foundation makes this system very natural.

It has two lace areas on the base for ventilation along with micro ventilation holes throughout the base making this system ultra breathable.

Use the guidelines on the base to easily reduce the size to medium (7"x 9") and small (6"x 8") in minutes.



- Approx Size:** 8" x 10"  
**Hair Type:** 100% human hair for excellent feel and condition.  
*Note: Grey content is in 100% human hair in all colours with up to and including 40% grey. All colours above 40% the grey content will be in synthetic fibre.*
- Hair Length:** 4 1/4" - 5 1/2"  
**Density:** Light/medium density throughout.  
**Skin Thickness :** 6 grams  
**Wave Pattern:** 28mm (Slight wave)  
**Hair Knotting:** V-loop in skin area a double split knot in lace area.

**Fixing Methods:** A variety of tapes, adhesives or bonding adhesives may be used on this unit.  
Daily wear tape method, 3-6 months wear depending on the individual wearer and the environment the hairpiece is subjected to.  
Required units per year: Two/Four  
Track bond method, (24hr wear) 6-10 weeks wear depending on the individual wearer and the environment the hairpiece is subjected to.  
Required units per year: Five/Nine  
Contact your supplier for more details.

**Colours Available:** 1, 1B, 1B10, 2, 3, 320, 340, 4, 410, 5, 520, 565, 580, 60, 7, 720